

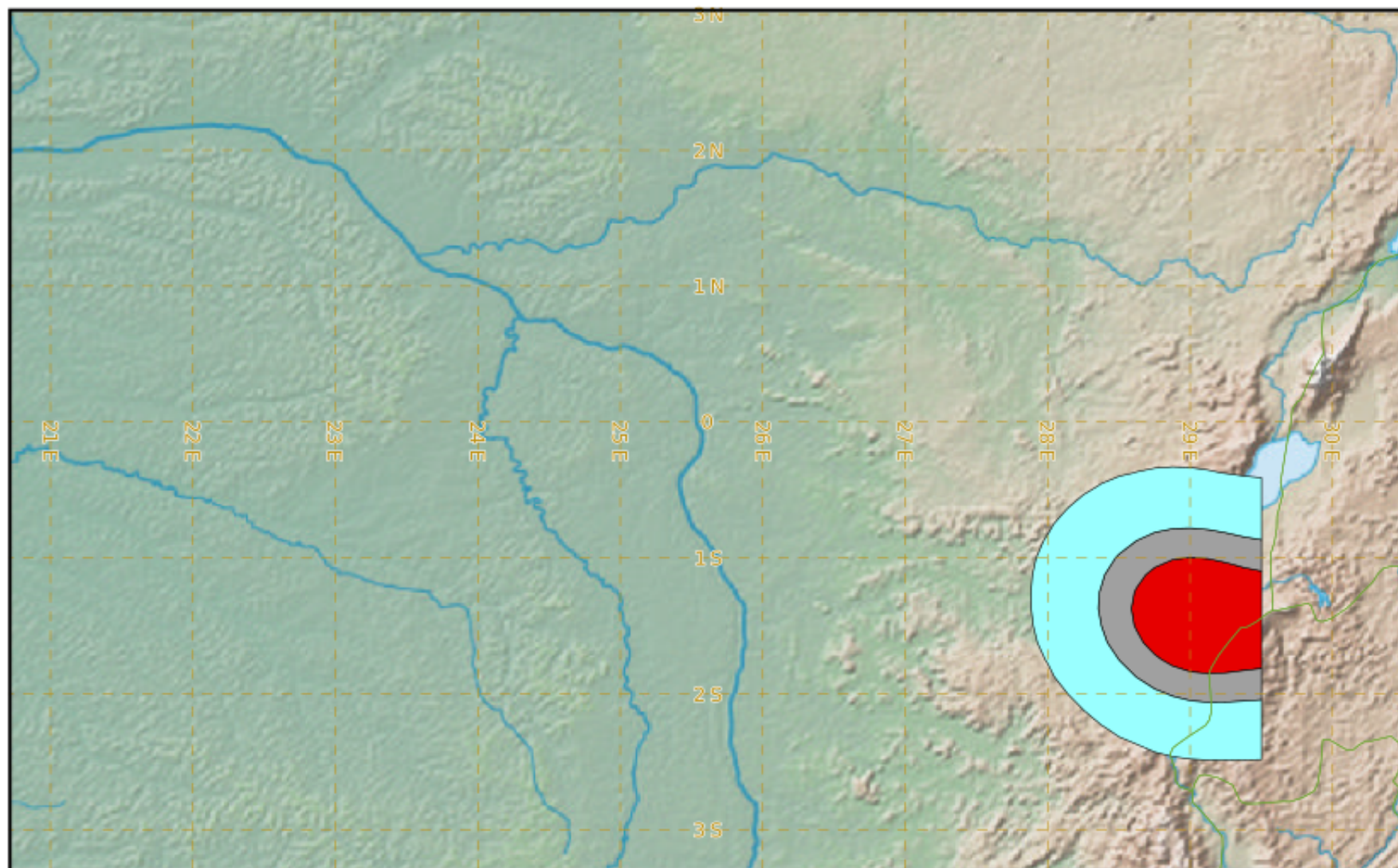
NYIRAGONGO TEST TEST TEST

Modelled Ash Concentration from FL200 to FL350

valid from 04/02/2020 04h00 UTC to 04/02/2020 10h00 UTC

This is a guidance product, supplemental to the official VAAC Toulouse Volcanic Ash Advisory and Volcanic Ash Graphic products.

VAAC TOULOUSE



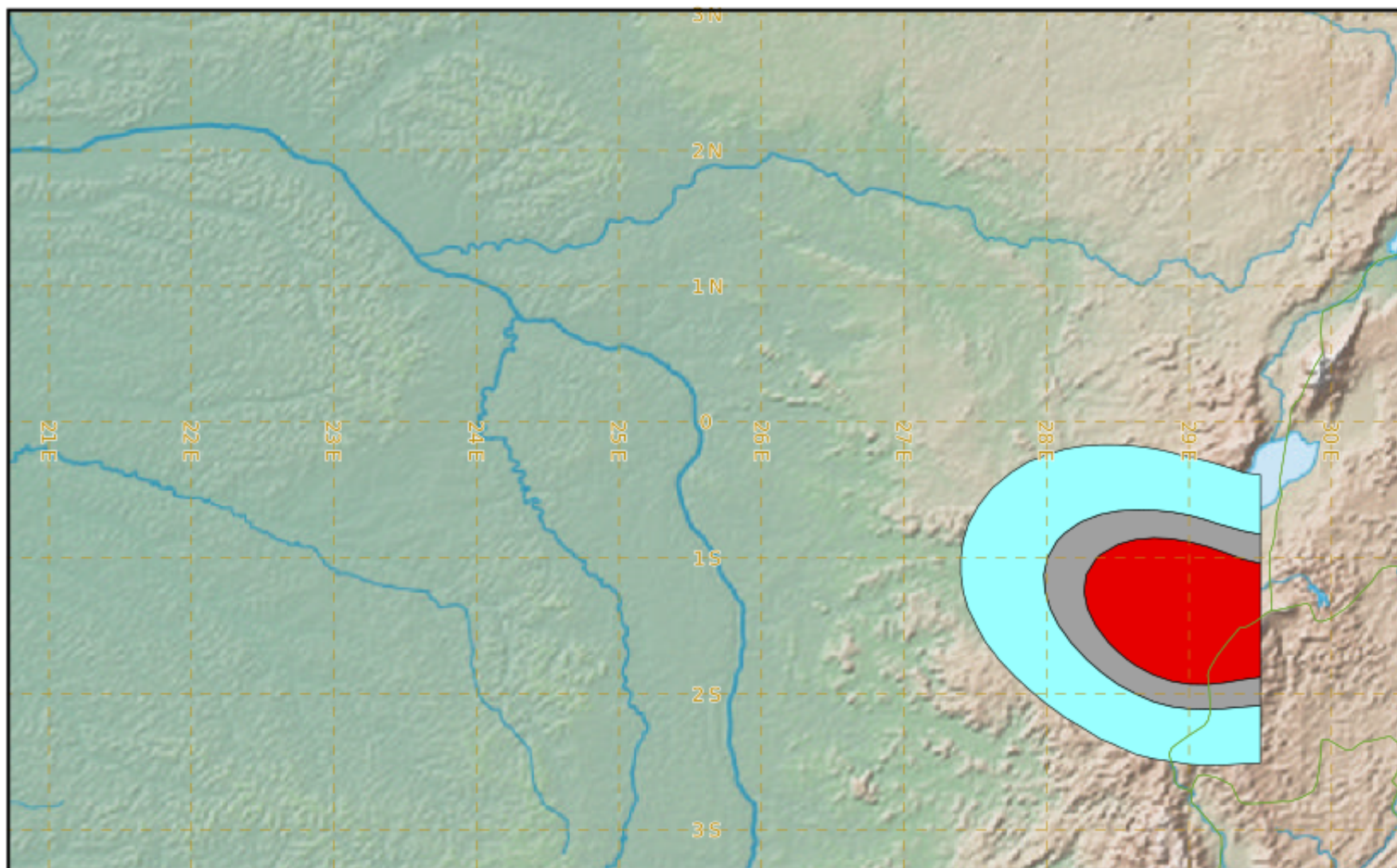
NYIRAGONGO TEST TEST TEST

Modelled Ash Concentration from FL200 to FL350

valid from 04/02/2020 06h00 UTC to 04/02/2020 12h00 UTC

This is a guidance product, supplemental to the official VAAC Toulouse Volcanic Ash Advisory and Volcanic Ash Graphic products.

VAAC TOULOUSE



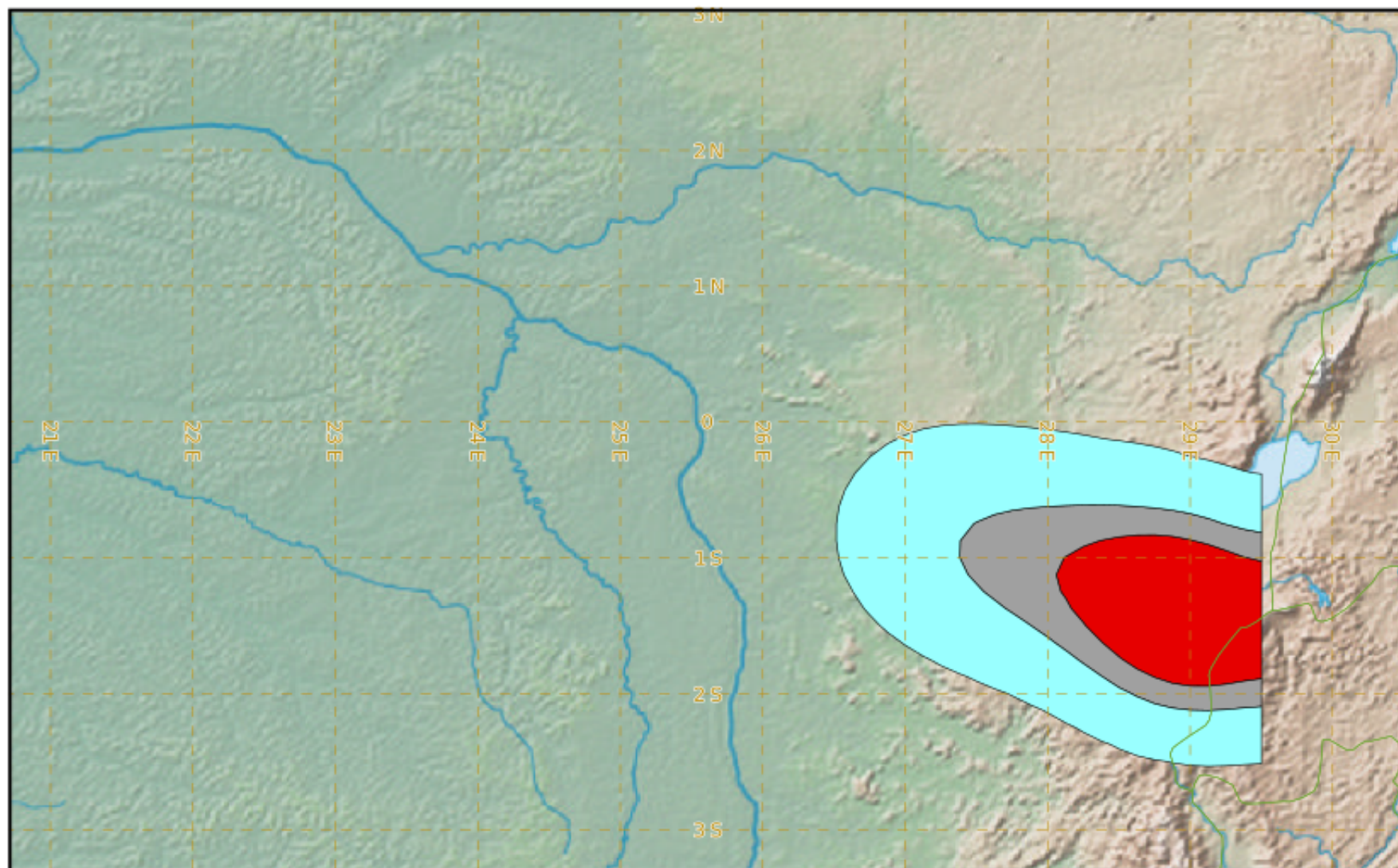
NYIRAGONGO TEST TEST TEST

Modelled Ash Concentration from FL200 to FL350

valid from 04/02/2020 09h00 UTC to 04/02/2020 15h00 UTC

This is a guidance product, supplemental to the official VAAC Toulouse Volcanic Ash Advisory and Volcanic Ash Graphic products.

VAAC TOULOUSE



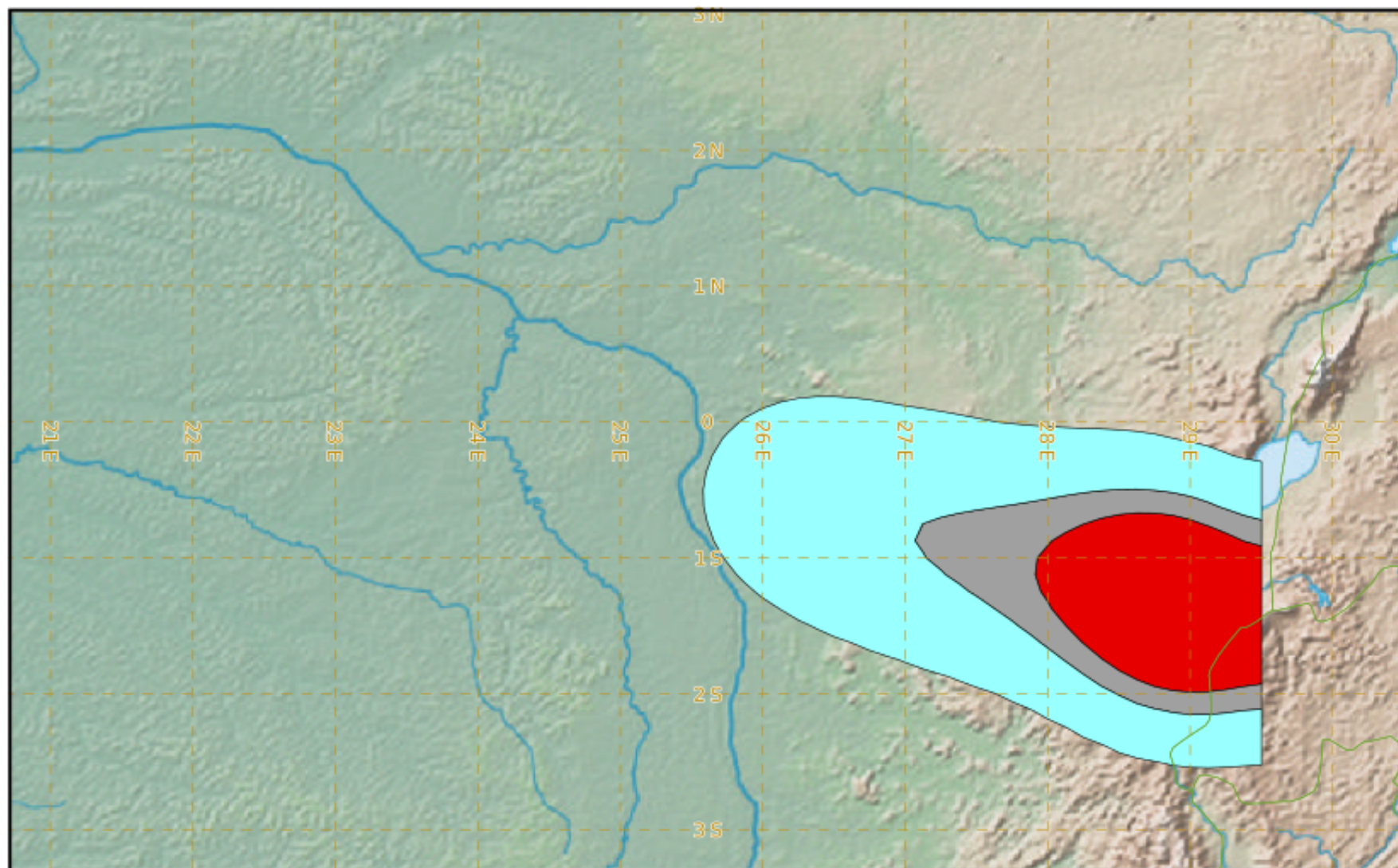
NYIRAGONGO TEST TEST TEST

Modelled Ash Concentration from FL200 to FL350

valid from 04/02/2020 12h00 UTC to 04/02/2020 18h00 UTC

This is a guidance product, supplemental to the official VAAC Toulouse Volcanic Ash Advisory and Volcanic Ash Graphic products.

VAAC TOULOUSE



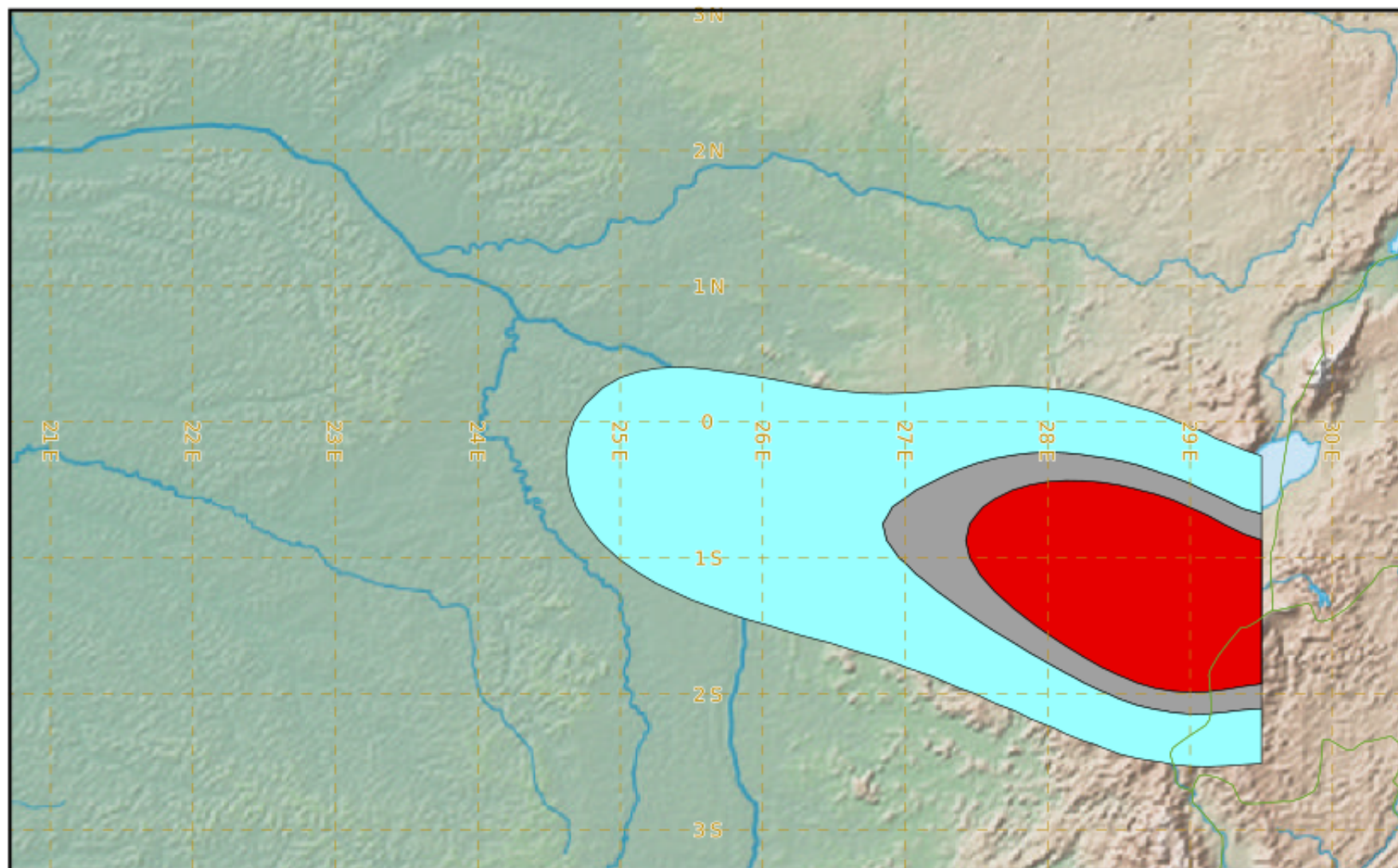
NYIRAGONGO TEST TEST TEST

Modelled Ash Concentration from FL200 to FL350

valid from 04/02/2020 15h00 UTC to 04/02/2020 21h00 UTC

This is a guidance product, supplemental to the official VAAC Toulouse Volcanic Ash Advisory and Volcanic Ash Graphic products.

VAAC TOULOUSE



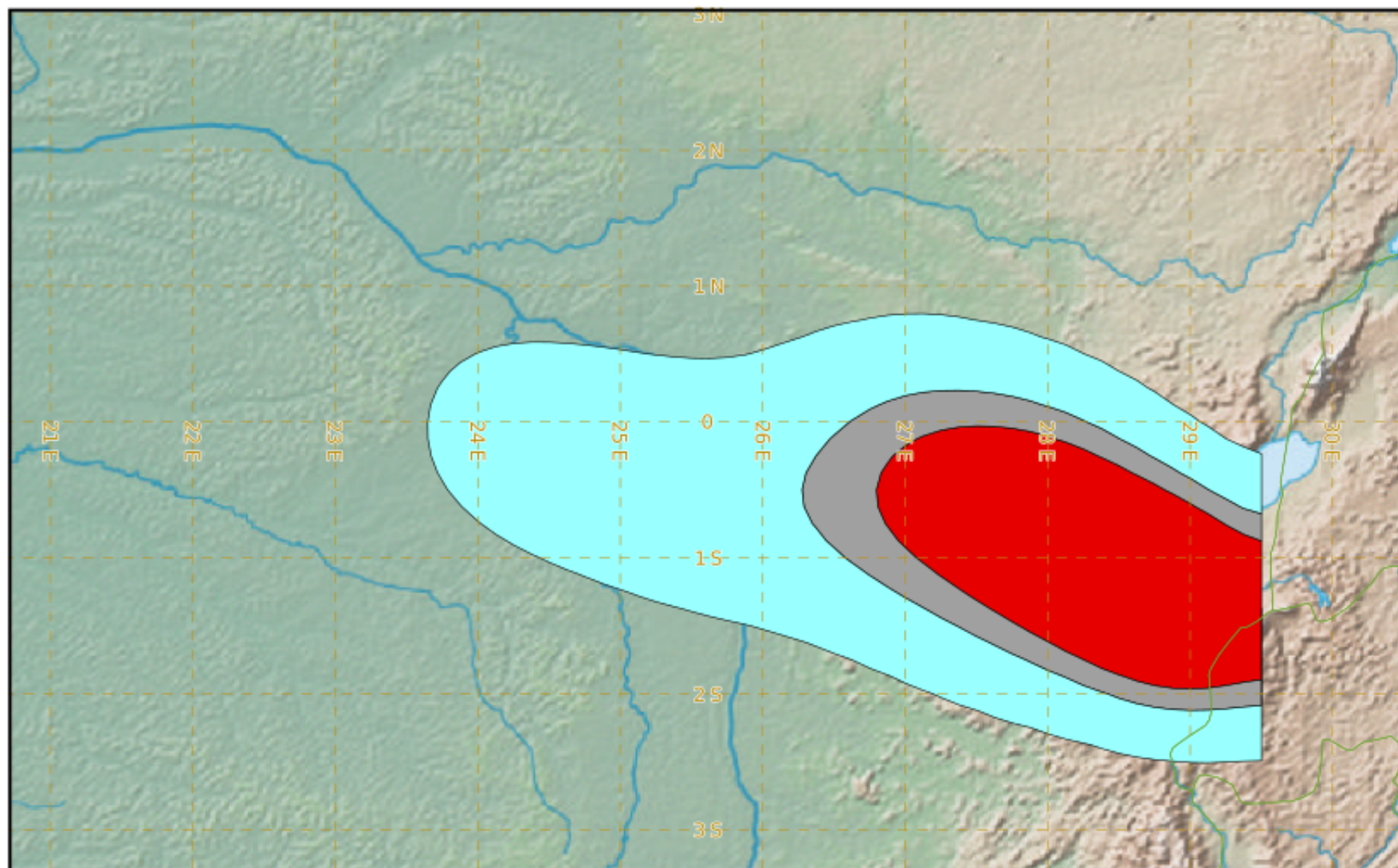
NYIRAGONGO TEST TEST TEST

Modelled Ash Concentration from FL200 to FL350

valid from 04/02/2020 18h00 UTC to 05/02/2020 00h00 UTC

This is a guidance product, supplemental to the official VAAC Toulouse Volcanic Ash Advisory and Volcanic Ash Graphic products.

VAAC TOULOUSE



NYIRAGONGO TEST TEST TEST

Modelled Ash Concentration from FL200 to FL350

valid from 05/02/2020 00h00 UTC to 05/02/2020 06h00 UTC

This is a guidance product, supplemental to the official VAAC Toulouse Volcanic Ash Advisory and Volcanic Ash Graphic products.

VAAC TOULOUSE

